



Clinical examination unit

Monthly report of October 2008

Table context the number of the lab. Cases on this month:

Laboratory investigation	Number of cases
Urine	11
urea	٢
Uric Acid	1
S.G.P.T (ALT)	1
S.G.O.T (AST)	1
HGB%	2
creatinine	1
stool	4
H.c.g	1
C.B.C	1
A.S.O	1
Blood glucose	5
Total cases	31

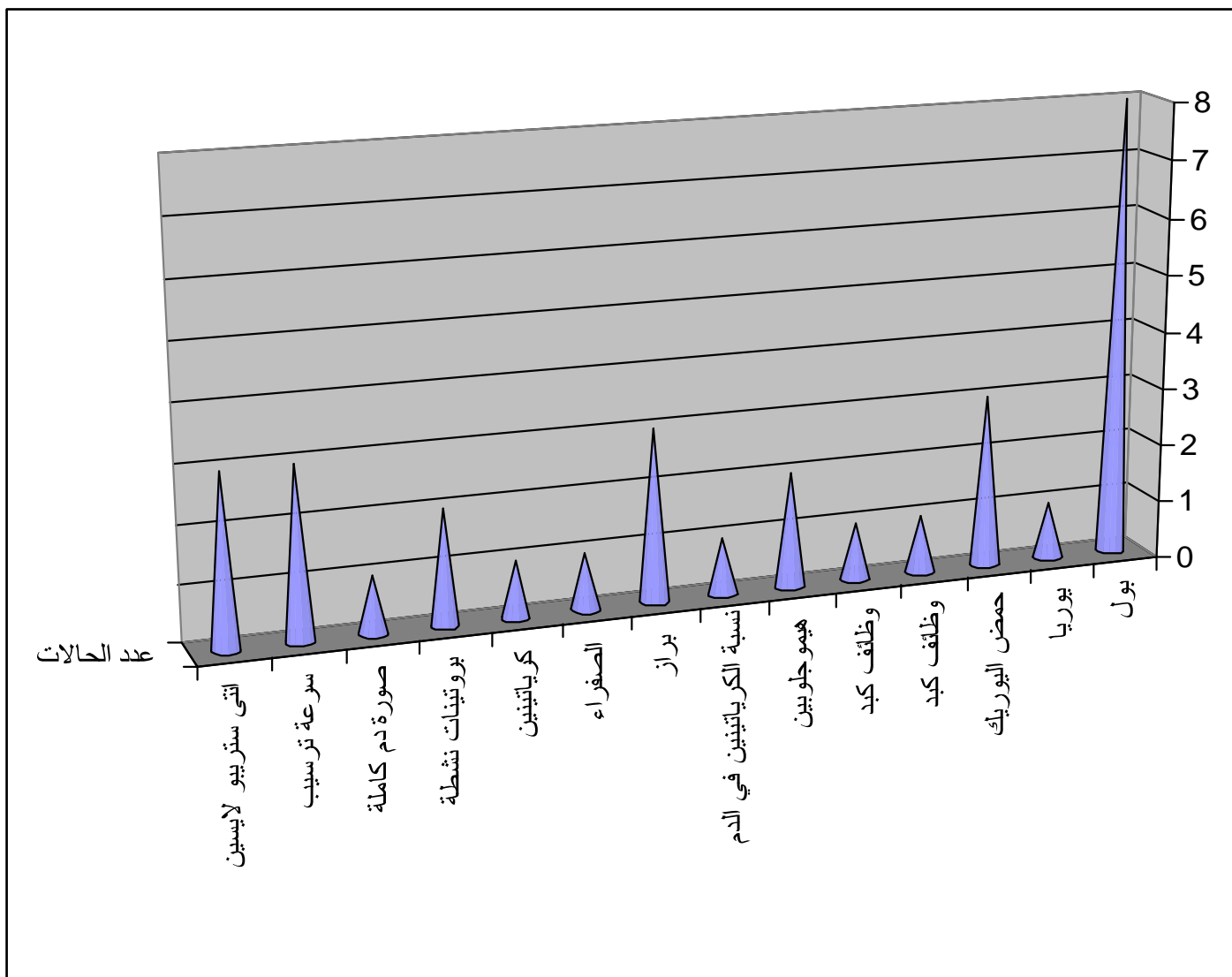


Chart flashes the relations between the laboratory investigations and the number of the cases