



Clinical examination unit

Monthly report of April 2008

Table context the number of the lab. Cases on this month:

Laboratory investigation	Number of cases
Urine	٢
urea	١
Uric Acid	
S.G.P.T (ALT)	٢
S.G.O.T (AST)	٢
HGB%	٣
creatinine	٢
stool	٢
albumin	1
GGT	1
Serum triglycerides	1
Serum cholesterol	2
C.B.C	١
Alkaline phophatase	2
Blood glucose	٣
Total cases	22

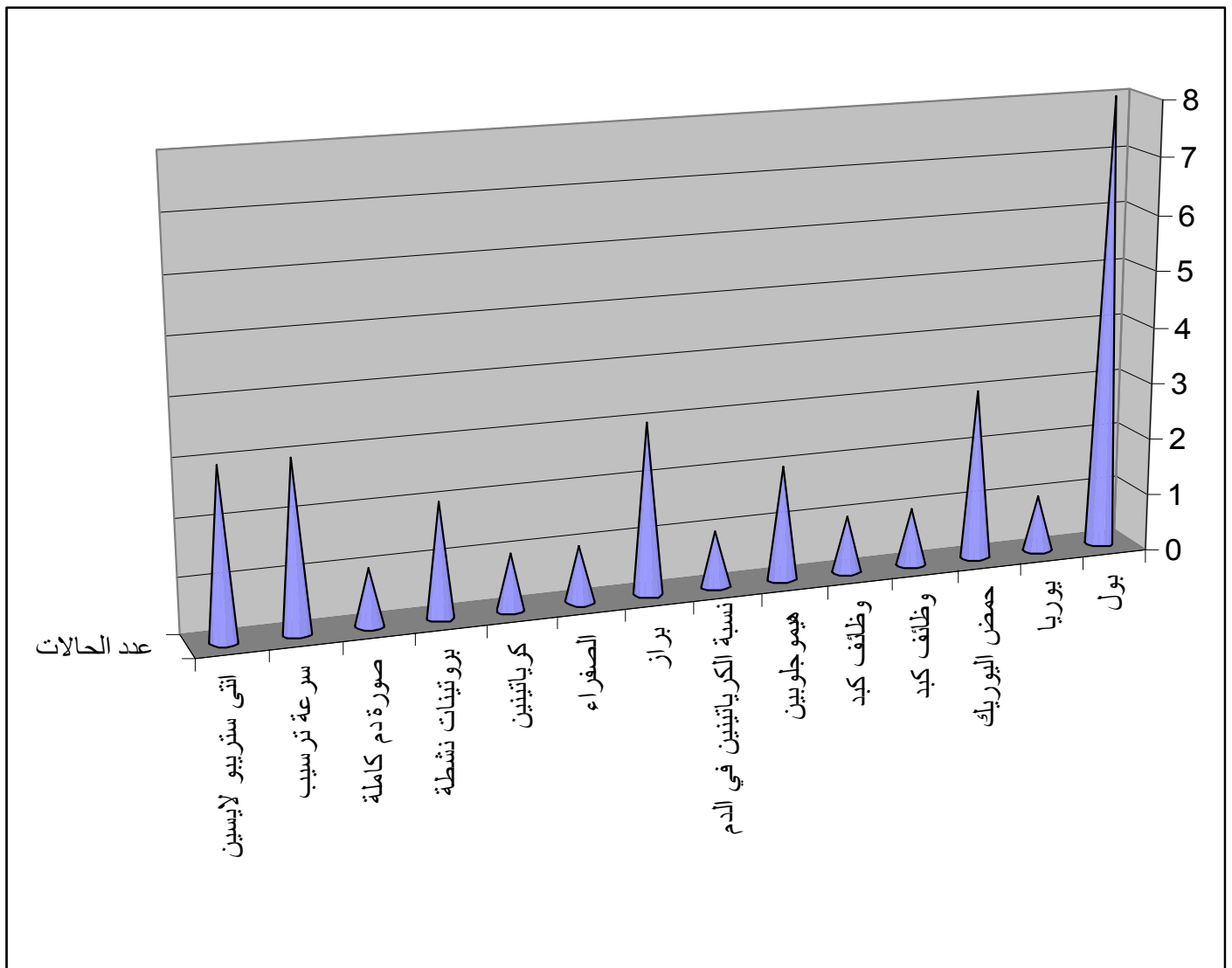


Chart flashes the relations between the laboratory investigations and the number of the cases